



Bold New Music, Passionate Performance



Meet the Cast of

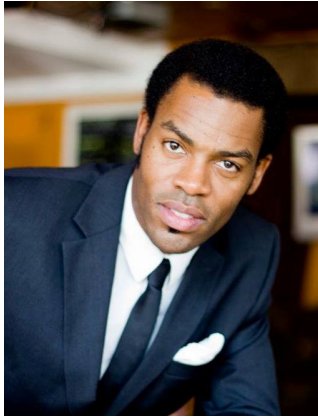
Howards End, America

Earplay's major new American chamber opera!



Praised by the New York Times for her “high flying virtuosity,” **soprano Nikki Einfeld**, as Margaret Schlegel, has appeared with leading opera companies and orchestras. A native of Canada, she is a former Adler Fellow and Grand Finalist in the Metropolitan Opera National Council Auditions. Nikki performs frequently with contemporary music ensembles and in chamber music.

Philip Skinner, as Henry Wilcox, enjoys an international career, having performed major bass-baritone roles of the repertoire with companies throughout the world, many at San Francisco Opera. He created the role of Edward Casaubon in the Shearer/Stevens 2015 opera *Middlemarch in Spring* at San Francisco’s Z Space and for the Charlottesville Opera 2017 East Coast premiere. In a glowing [feature article](#) on Skinner, Joshua Kosman traces Phil’s stellar career in opera.



Tenor Michael Dailey, as an African-American Leonard Bast, ensnared in the schemes of Henry, Margaret and Helen, has performed a range of roles as a Principal Resident Artist with San Jose Opera. Opera News described his as a voice “blessed with freshness.”



Soprano Sara Duchovnay, as the reckless and willful Helen, appears on opera stages throughout America. She created the major role of Dorothea in *Middlemarch in Spring* at Z Space and repeated that performance with Charlottesville Opera. Praised for her “expressive grace” by the San Francisco Chronicle, Sara is also a fashion entrepreneur.



Mezzo-soprano Lori Willis, in the poignant role of fading club singer Jacky, is a leading area soloist, appearing with Oakland Opera, Oakland-East Bay Orchestra and Sacramento Philharmonic. Lori is voice instructor at Laney College and director of the Lucy Kinchen Chorale.



Baritone Daniel Cilli, as the shallow, nasty fraternity jock Charles, also was a Principal Resident Artist at San Jose Opera. His recently acclaimed performances range from Kurt Rohde’s *Death with Interruptions* to Don Quixote in *Man of la Mancha*.



Mezzo-soprano Erin Neff, as Ruth Wilcox, has appeared in numerous San Francisco Opera productions ranging from *Rigoletto* to *The Bonesetter's Daughter*. She also performs as a cabaret artist.



[Tickets On Sale Now](#)

Reserve your seats today for this riveting production!

Z Space

450 Florida Street, San Francisco

February 22-24, 2019

Press for [Howards End, America](#)

[Interview in OperaWire](#)

"Stevens sparks the fire with an idea"

*"Shearer creates from
the center of the spark"*

[Preview in Broadway World](#)

"they have transformed it into an American story for an American audience, transporting the action from the gracious homes of Edwardian England to enclaves of America privilege and despair"

[San Francisco Classical Voice](#)

Review of scenes presented at West Edge Opera's Snapshot 2017

"dynamic orchestral score"
"plenty of drama"

[More information on Earplay's Upcoming Season 34](#)

DESIRE & IDEA

Mise en abyme

February 11, 2019
Taube Atrium Theater
[Tickets](#)

Sound & Shadow

April 8, 2019
Taube Atrium Theater
[Tickets](#)

Windrose Lines

May 20, 2019
Herbst Theater
[More Info](#)

[Forward this message to a friend](#)
[Contact us](#)

[Click to view this email in a browser](#)

If you no longer wish to receive these emails, please reply to this message with "Unsubscribe" in the subject line or simply click on the following link:
[Unsubscribe](#)

Earplay
560 29th St.
San Francisco, California 94131-2239
US

[Read](#) the VerticalResponse marketing policy.

vertical DELIVERED BY
response
Try It Free Today!